



Introducing the **VP3**

Vapor Proof Linear Fixture



2', 4', 8'

OUT OF THE BOX READY

INCLUDES V-HOOK, CABLE GLAND FOR SEALING, ANCHORS AND SCREWS; STAINLESS STEEL CLIPS



EASILY ADD CONTROLS

BEHIND THE LENS SENSOR COMPATIBLE



CONTACT US TODAY!

2' = 2100 to 3500 lm

4' = 3640 to 9100 lm

8' = 9100 to 12,600 lm

Up to 140 lm/W

120-347V

PowerSet & Fixed CCT

PowerSet & FieldCCeT

Battery backup available
(factory installed)

Polycarbonate Lens

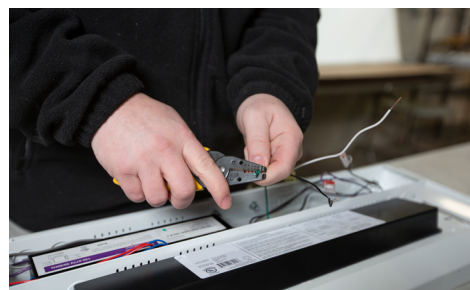
DLC Standard

IP66 & NEMA 4X

Estimated L70: 100,000 Hours

FACTORY INSTALLED OPTIONS

FACTORY INSTALLED 8W INTERNAL
BATTERY BACKUP
MULTIPLE CORD LENGTHS AND ENDS



RoHS
Compliant

FC

CAN
ICES-005

IP66

IK10

